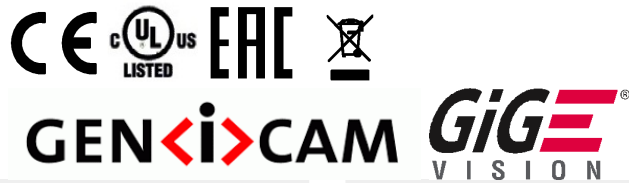
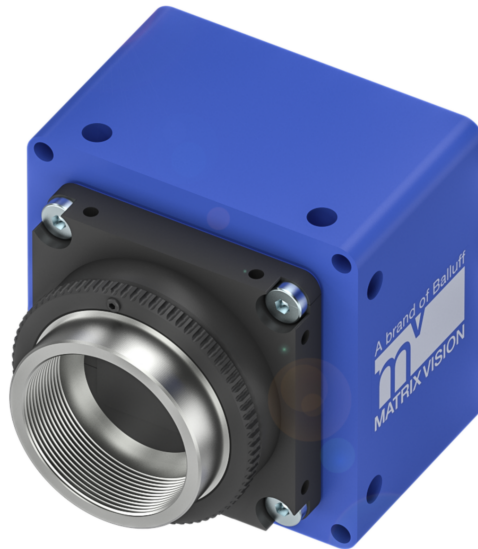


MATRIX VISION Industrial Cameras
mvBlueCOUGAR-XD Series - Standard



BVS CA-GX2-xxxxxx-(1)(2)(3)(4)(5)(6)-001

mvBlueCOUGAR-XD / BVS CA-GX2-xxxxxx-(1)(2)(3)(4)(5)(6)-001
Dual-GigE Vision industrial camera

xxxxxx Model
See table below

(1) Handling
1 = Standard handling

(2) Lensholder
1 = C-Mount, Type2, with high durability and factory-set backfocus, fixed square filter
2 = C-Mount, Type1, with adjustable backfocus, round filter with screw ring, Ø23.2 mm
5 = C-Mount, Type3 (low cost, factory-set backfocus, Ø23.2 mm Filter)
N = M42x1 mount, 12mm factory-set backfocus, fixed square filter
P = M42x1 mount, 45.5mm factory-set backfocus, fixed square filter
Q = F-Mount, 46mm factory-set backfocus, fixed square filter
T = TFL mount, 17.5 mm factory-set backfocus, fixed square filter

(3) Filter
0 = Without filter
1 = IR-Cut
2 = Glass filter
3 = Daylight cut

(4) Housing
1 = Standard housing, blue with logo, aluminium

(5) I/O
2 = Standard I/Os

(6) Software
0 = None

MATRIX VISION Industrial Cameras
mvBlueCOUGAR-XD Series - Standard



Balluff model name	Model name	Resolution	FPS	Sensor	Pixel size
BVS CA-GX2-	mvBlueCOUGAR-XD				
0016ZG/C	102fG/C	1.6 MP (1456 x 1088)	226.5/149.9*	IMX273 (1/2.9", GS, CMOS)	3.45 µm
0024ZG/C	104dG/C	2.4 MP (1936 x 1216)	164/100.8*	IMX174 (1/1.2", GS, CMOS)	5.86 µm
0032ZG/C	104hG/C	3.2 MP (2064 x 1544)	123/74.5*	IMX252 (1/1.8", GS, CMOS)	3.45 µm
0051ZG/C	105aG/C	5.1 MP (2464 x 2056)	80/46.8*	IMX250 (2/3", GS, CMOS)	3.45 µm
0051DG/C	105dG/C	5.1 MP (2472 x 2064)	74.0/46.5*	IMX547 (1/1.8", GS, CMOS)	2.74 µm
0071ZG/C	107G/C	7.1 MP (3216 x 2208)	50.6/33.4*	IMX420 (1.1", GS, CMOS)	4.5 µm
0071AG/C	107bG/C	7.1 MP (3216 x 2208)	50.9/33.4*	IMX428 (1.1", GS, CMOS)	4.5 µm
0081AG/C	108aG/C	8.1 MP (2856 x 2848)	48.0/29.1*	IMX546 (2/3", GS, CMOS)	2.74 µm
0089AG/C	109bG/C	8.9 MP (4096 x 2176)	31.9/26.6*	IMX267 (1", GS, CMOS)	3.45 µm
0124AG/C	1012bG/C	12.3 MP (4096 x 3008)	23/19.2*	IMX304 (1.1", GS, CMOS)	3.45 µm
0124DG/C	1012dG/C	12.4 MP (4128 x 3008)	33.0/19.1*	IMX545 (1/1.1", GS, CMOS)	2.74 µm
0162AG/C	1016G/C	16.2 MP (5328 x 3040)	26.3/14.6*	IMX542 (1.1", GS, CMOS)	2.74 µm
0204AG/C	1020aG/C	20.4 MP (4512 x 4512)	20.9/11.6*	IMX541 (1.1", GS, CMOS)	2.74 µm
0246AG/C	1025G/C	24.6 MP (5328 x 4608)	17.6/9.6*	IMX540 (1.2", GS, CMOS)	2.74 µm
0315ZG/C	1031G/C	31.5 MP (6480 x 4856)	12.1/7.5*	IMX342 (APS-C, GS, CMOS)	3.45 µm

G/C = Monochrome and color models available
FPS = Frames per Second
GS = Global Shutter
RS = Rolling Shutter
** = Burst Mode/Streaming*

MATRIX VISION Industrial Cameras mvBlueCOUGAR-XD Series - Standard



Basic features

Approval/Conformity	CE cULus EAC WEEE
Standards	EMVA 1288 GigE Vision GenICam
Version	GigE Vision industrial camera

Electrical connection

Connection 1	GigE-Bus: RJ45-Female, 8-pin
Connection 2	GigE-Bus: RJ45-Female, 8-pin
Connection 3	Power/ IO: HIROSE-Male, 12-pin
Connection 4	Lens control / IO: HIROSE-Female, 12-pin
Connection 5	Video iris: Jack plug, 4-pin
Polarity reversal protected	yes
Short-circuit protection	yes

Electrical data

Current draw max.	1000 mA
Operating voltage Ub	10...28 VDC

Environmental conditions

Ambient temperature	0...45 °C
EN 60068-2-27, Shock	-
EN 60068-2-6, Vibration	-
IP rating	IP30
Relative humidity	20...80%
Storage temperature	-20...60 °C

Remarks

Not included in scope of delivery: Camera lens, filter, light, connection cable, power supply

* Refer to manual for exact values

For more information about MTTF and B10d see MTTF / B10d Certificate

Indication of the MTTF- / B10d value does not represent a binding composition and/or life expectancy assurance; these are simply experiential values with no warranty implications. These declared values also do not extend the expiration period for defect claims or affect it in any way.

Functional Characteristics

Binning	1x1...16x16 *
Data storage	256 MB
Decimation	1x1...16x16 *
Exposure time	10 µs...20 s *
Filter	IR cut filter, other filters on request
Image formats	Mono8...Mono16 Bayer8...Bayer16, RGB, YUV *
Trigger Modi	Free run Hardware trigger Software trigger

Interface

Auxiliary interfaces	RS232
Digital inputs	4x PNP galvanically isolated
Digital outputs	4x PNP high side
Interface	2 x Gigabit Ethernet

Material

Housing material	Aluminium, Powder coated
-------------------------	--------------------------

Mechanical data

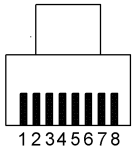
Dimension	50 mm x 50 mm x 52.1 mm
Lens mount	C-Mount
Weight	170 g

MATRIX VISION Industrial Cameras
 mvBlueCOUGAR-XD Series - Standard



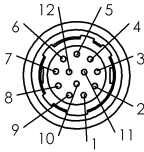
Connector Diagramm

RJ45



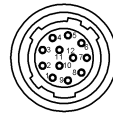
- PIN 1: BI_DA+
- PIN 2: BI_DA-
- PIN 3: BI_DB+
- PIN 4: BI_DC+
- PIN 5: BI_DC-
- PIN 6: BI_DB-
- PIN 7: BI_DD+
- PIN 8: BI_DD-

Power / IO



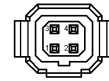
- PIN 1: GND
- PIN 2: PWR_IN
- PIN 3: DigOut3
- PIN 4: Opto DigIn0
- PIN 5: DigOut2
- PIN 6: DigOut0
- PIN 7: Opto DigIn_GND
- PIN 8: RS232 RX
- PIN 9: RS232 TX
- PIN10: DigOut_PWR_IN
- PIN11: Opto DigIn1
- PIN12: DigOut1

Lens Control / IO



- PIN 1: Opto DigIn2
- PIN 2: Opto DigIn_GND
- PIN 3: Opto DigIn3
- PIN 4: Focus+
- PIN 5: Focus-
- PIN 6: Zoom+
- PIN 7: Zoom-
- PIN 8: Iris+
- PIN 9: Iris-
- PIN10: Channel4+
- PIN11: Channel4-
- PIN12: GND

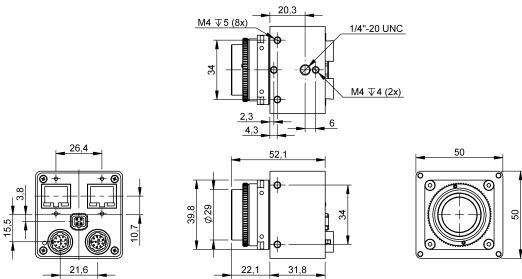
Video iris



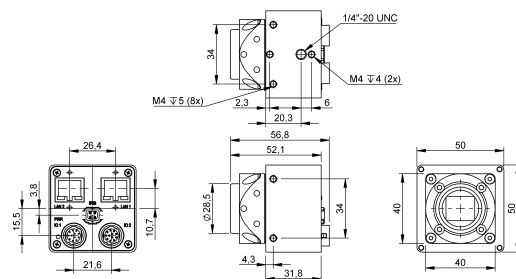
- PIN 1: IRIS_PWR_IN
- PIN 2: n.c.
- PIN 3: IRIS_CTRL
- PIN 4: GND

Product View

BVS CA-GX2-xxxxxx-x2x11x



BVS CA-GX2-xxxxxx-x1x11x / -x5x11x



BVS CA-GX2-xxxxxx-xNx11x

